

**Oro ponteggio<sup>®</sup>**

CAST IRON PIPE & FITTING



## Introduction

Cast Iron Drainage Pipes has long been employed by the building industry as a reliable and inexpensive drainage system. Comparing with plastic pipes, cast iron is more solid and durable. Furthermore, because cast iron has excellent noise suppression and fire resistant characteristic, it is every architect's choice for drainage inside the building.

ISO6594: Socketless Pipe System is solid and durable, with excellent noise suppression, fire resistant, low thermal expansion and superior anti corrosion properties. Because it is very easy to assemble with our stainless steel couplings, it saves time and money.

**Cast Iron** - All Pipes and fittings are made of cast iron exceeding ISO185 grade 150 grey iron standard. It is well known that cast iron has been used for construction for centuries, which demonstrated its durability. And because of its strength, it can withstand high impact forces. Cast iron pipe has been proven by laboratory tests to have a superior noise suppression characteristic. Because cast iron exceeds standard fire resistant requirements, it is commonly used to penetrate fire separations without adding extra fire preventing measures.

**Centrifugal Cast Iron Pipes** - Our pipes are centrifugally cast. Molten metal is pour into a high-speed rotating mold and the metal is thrown to the inner wall of the mold. The great centrifugal force eliminates impurities, which creates a dense and homogenous microstructure for the pipe.

**Epoxy Coating** - Our pipes are coated with epoxy paint coating to provide superior corrosion protection to household detergent, grease and many other corrosive chemicals.

**Stainless Steel Coupling** - Our stainless steel couplings are manufactured to provide easy installation and protection against corrosive environment. The couplings can be fitted with electrical continuity strip for used in high rise building, which requires electrical continuity for thunder protection

Oro Ponteggio is the answer of drainage system needs. We guarantee to serve better and customers satisfaction is our goal.





## The standard external diameters (EN 877)



Dimensions in millimeters

DN	External diameter DE		Wall thickness	
	Nominal value	Tolerance	Nominal value	Minimum value
40	48	+2 -1	3,0	2,5
50	58	+2 -1	3,5	3,0
70	78	+2 -1	3,5	3,0
75	83	+2 -1	3,5	3,0
100	110	+2 -1	3,5	3,0
125	135	+2 -2	4,0	3,5
150	160	+2 -2	4,0	3,5
200	210	+2,5 -2,5	5,0	4,0
250	274	+2,5 -2,5	5,5	4,5
300	326	+2,5 -2,5	6,0	5,0

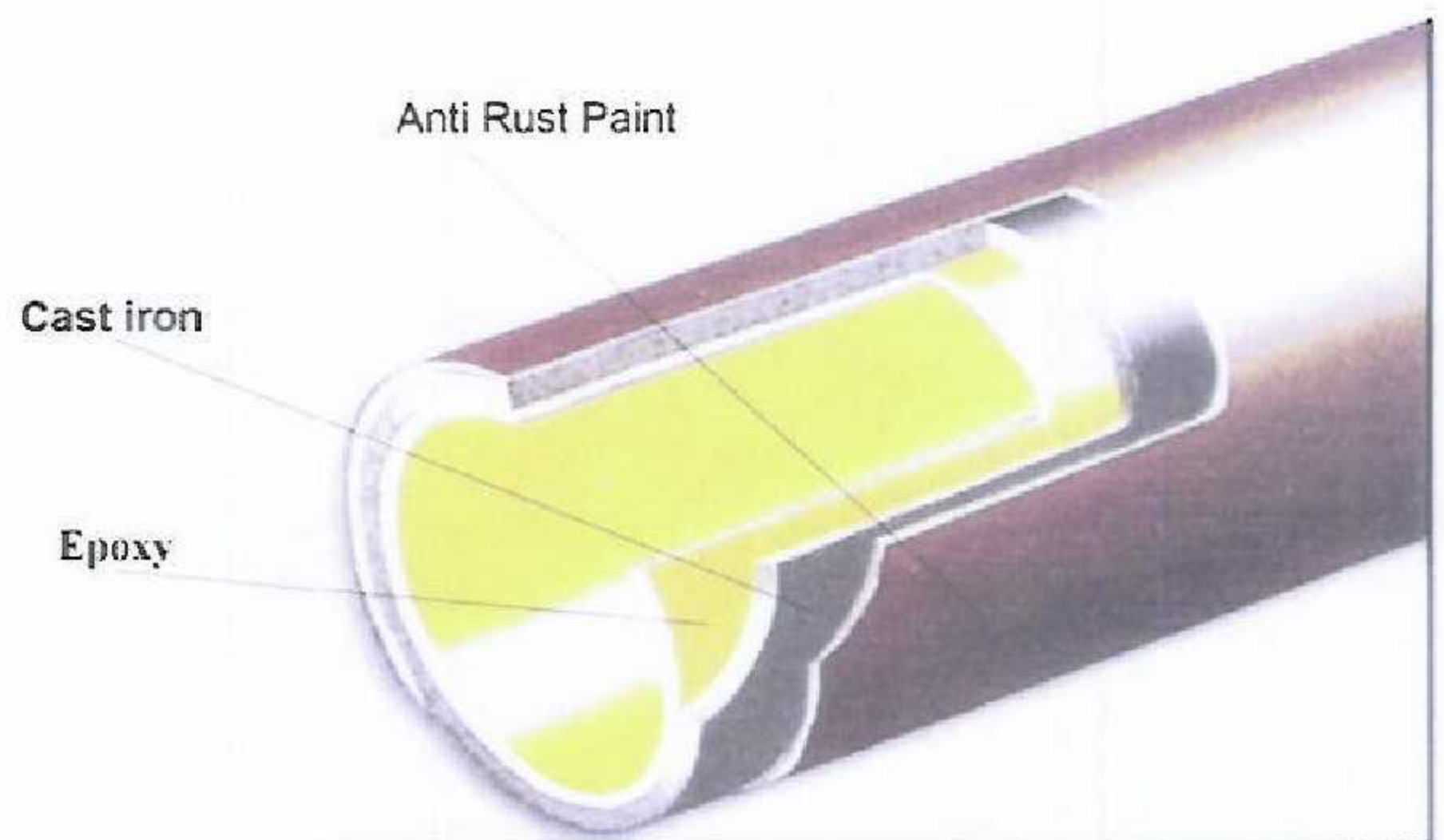
NOTE1: In countries where the nominal sizes DN 60 and DN 80 are still mentioned in application standards these nominal sizes can still be used.

NOTE2: DN 75 is permitted according to local custom and conditions until harmonization.

NOTE3: Other dimensions are given in 4.8 for buried systems and in 4.9 for rainwater systems installed outside buildings.







Properties of **ORO PONTEGGIO** pipe material is according to ISO 185 grade 150 :

Density : Approx 7,2 kg/dm<sup>3</sup> ( 71.5 KN/m<sup>3</sup> )

Tensile strength : ≥ 150 mpa for fitting  
: ≥ 200 mpa for pipe

Crushing strength : ≥ 350 mpa

Coefficient of length expansion : 0.0105 mm/mK ( 0° - 100° C )

Thermal conduction coefficient : 50 – 60 W/mK ( 20° C )

Chemical resistance works : Within range of PH 2- PH 12

Temperature resistance : Cast iron does not burn

Internal Coating : Epoxy

- Anti hot water: 30 hrs ( below 95° C )
- Anti salt spray : 300 hrs or above
- Thickness : 120 – 150 mm

External Coating : Anti Rust paint ( red ferrite oxide paint )

- Color : Brown or red brown
- Thickness : 40 mm – 50 mm





# STAINLESS STEEL COUPLING



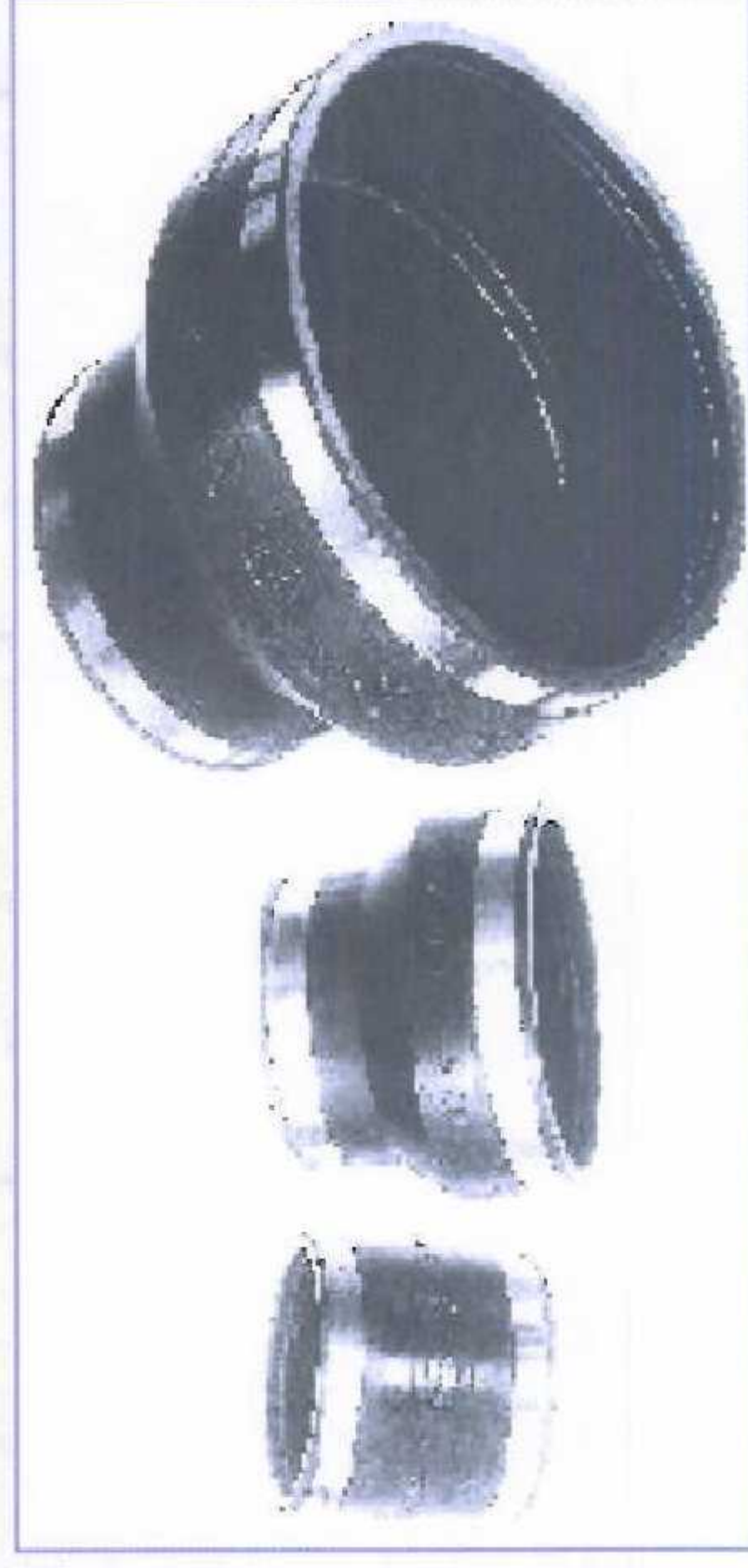
**COUPLING TYPE B**



**COUPLING TYPE F**



**COUPLING TYPE F**



**RUBBER COUPLING & RUBBER REDUCER**



**COUPLING TYPE A**





# Oro Ponteggio

## Cast Iron Fittings (EN 877)



15° BEND



45° BEND



30° BEND



88° BEND



88° DOUBLE BEND



CIRCLE CLEAN PIPE



88° BRANCH



45° BRANCH



90° UNEQUAL BRANCH



45° CORNER DOUBLE BRANCH



88° DOUBLE BRANCH



TRAP



QUADRATE CLEAN PIPE



MANUAL CLEAN PIPE



135° BEND



STACK SUPPORT PIPE



OFFSETS



EXPANSION PLUG



PIPE TAPERS



BLANK ENDS



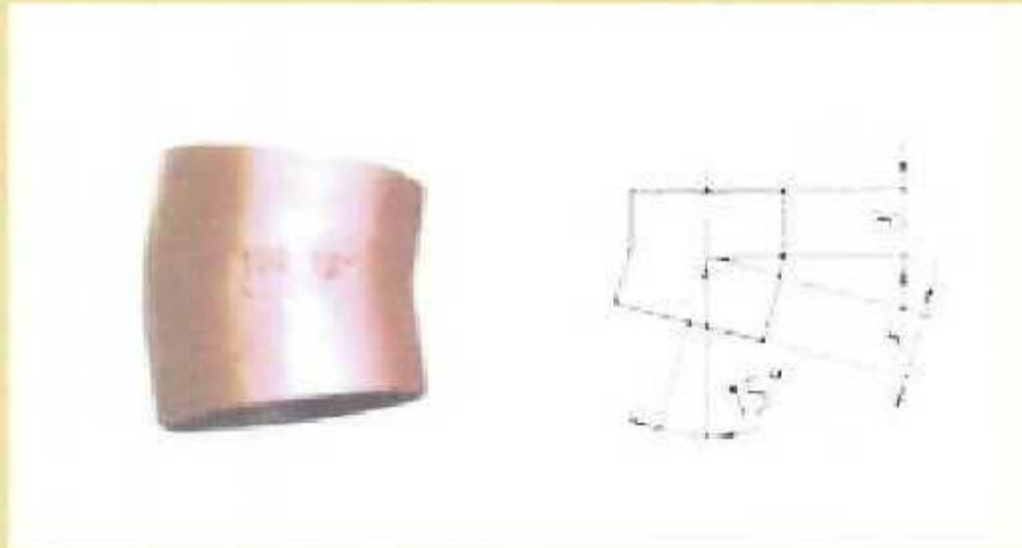


# Oro Ponteggio

## Cast Iron Pipe Bends

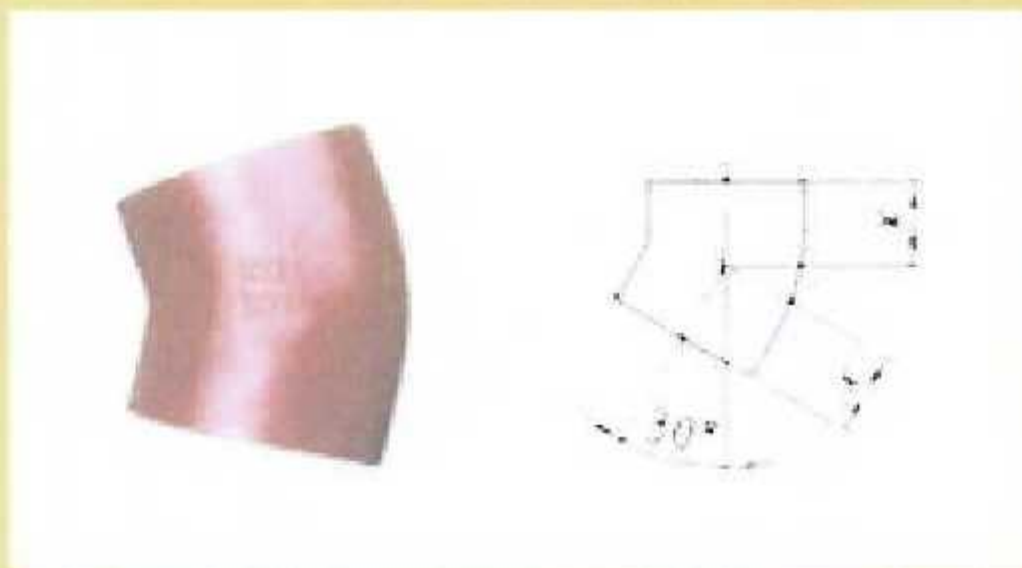
DIN EN877

### 15° Bends



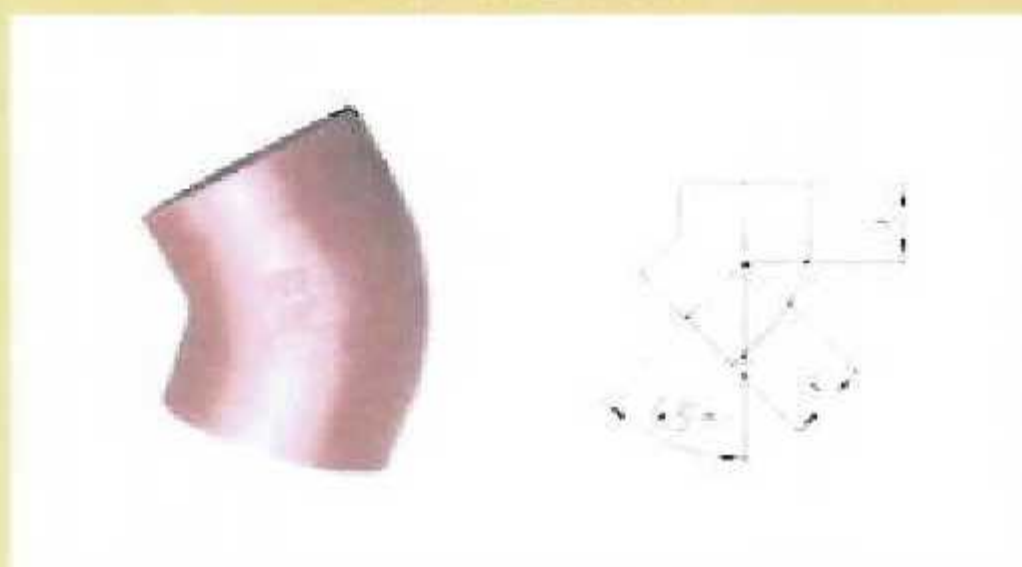
Size	X	Weight
DN50	40 mm	0.4 kgs
DN70	45 mm	0.6 kgs
DN75	50 mm	0.7 kgs
DN100	50 mm	1.0 kgs
DN125	60 mm	1.7 kgs
DN150	65 mm	2.5 kgs
DN200	80 mm	4.6 kgs

### 30° Bends



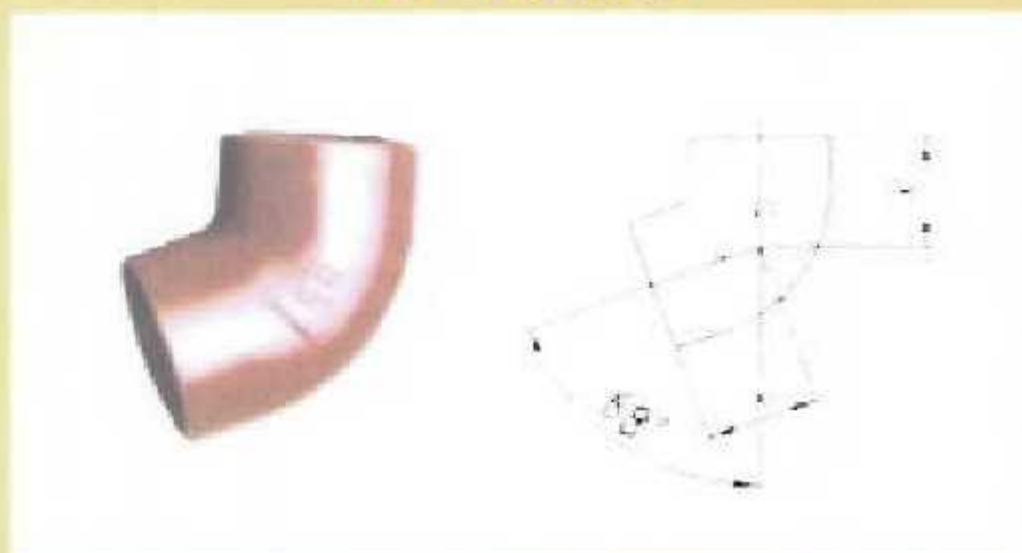
Size	X	Weight
DN50	45 mm	0.5 kgs
DN70	50 mm	0.7 kgs
DN75	60 mm	0.8 kgs
DN100	60 mm	1.3 kgs
DN125	70 mm	2.0 kgs
DN150	80 mm	3.0 kgs
DN200	95 mm	5.4 kgs

### 45° Bends



Size	X	Weight
DN50	50 mm	0.5 kgs
DN70	60 mm	0.9 kgs
DN75	60 mm	1.0 kgs
DN100	70 mm	1.6 kgs
DN125	80 mm	2.3 kgs
DN150	90 mm	3.5 kgs
DN200	110 mm	6.2 kgs

### 68° Bends

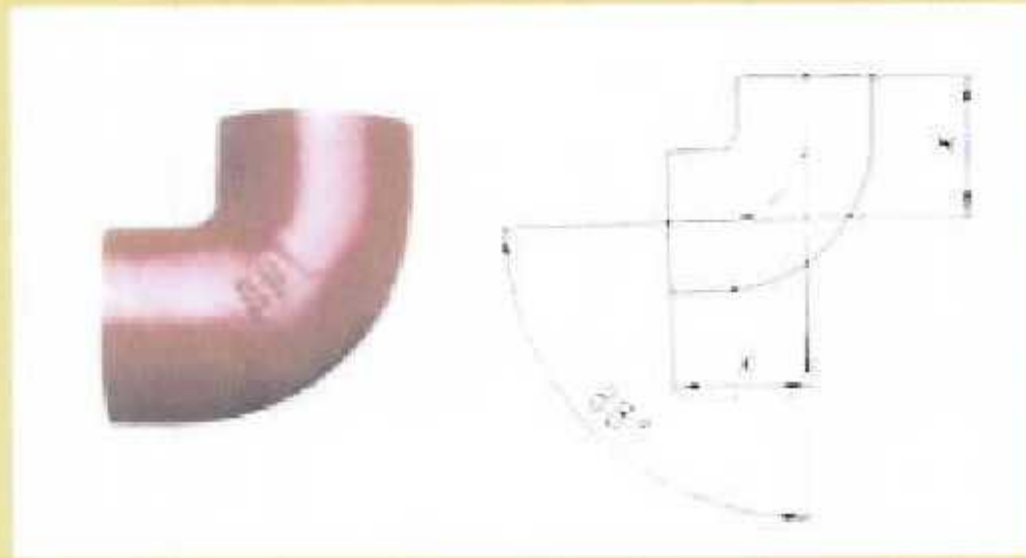


Size	X	Weight
DN50	65 mm	0.7 kgs
DN70	75 mm	1.1 kgs
DN75	80 mm	1.2 kgs
DN100	90 mm	1.9 kgs
DN125	105 mm	2.9 kgs
DN150	120 mm	4.3 kgs
DN200	145 mm	7.7 kgs





### 88° Bends



Size	X	Weight
DN50	75 mm	0.7 kgs
DN70	90 mm	1.1 kgs
DN75	95 mm	1.2 kgs
DN100	110 mm	1.9 kgs
DN125	125 mm	2.9 kgs
DN150	145 mm	4.3 kgs
DN200	180 mm	8.7 kgs

### 88° Long Bends



Size	X1	X2	X3	Weight
DN50	50 mm	100 mm	121 mm	0.7 kgs
DN70	60 mm	120 mm	145 mm	1.1 kgs
DN75	60 mm	120 mm	145 mm	1.2 kgs
DN100	70 mm	140 mm	170 mm	2.1 kgs
DN125	80 mm	160 mm	195 mm	2.9 kgs
DN150	90 mm	180 mm	219 mm	4.9 kgs
DN200				8.8 kgs

### 135° Bends



Size	K	L	X	Weight
DN100	100 mm	150 mm	312 mm	5.0 kgs

### 88° Double Branches



Size		L (mm)	X1 (mm)	X2 (mm)	X3 (mm)	C (mm)	Weight
DN1	DN2						
100	50	180	100	80	105	22	2.2 kgs
100	70	190	102	88	110	22	2.7 kgs
100	100	230	120	110	120	22	3.2 kgs
125	100	245	130	115	135	25	
150	100	245	130	115	145	27.5	





## 45° Single Branches



Size		L (mm)	X1 (mm)	X2 (mm)	X3 (mm)	Weight
DN1	DN2					
50	50	185	50	135	135	1.4 kgs
70	50	190	40	150	150	1.6 kgs
70	70	215	55	160	160	2.3 kgs
75	50	190	50	140	140	1.8 kgs
75	75	225	65	160	160	2.4 kgs
100	50	200	35	165	165	2.5 kgs
100	70	235	50	185	185	3.3 kgs
100	75	230	55	175	175	3.1 kgs
100	100	275	70	205	205	4.2 kgs
125	50	205	20	185	185	3.4 kgs
125	70	240	40	200	200	4.3 kgs
125	75	250	50	200	200	
125	100	280	60	220	220	5.2 kgs
125	125	320	80	240	240	6.4 kgs
150	70	245	30	215	215	5.6 kgs
150	100	295	55	240	240	6.8 kgs
150	125	325	70	255	255	8.0 kgs
150	150	355	90	265	265	9.2 kgs
200	100	305	40	265	265	10.0 kgs
200	125	335	55	280	280	11.9 kgs
200	150	375	75	300	300	13.3 kgs
200	200	455	115	340	340	17.2 kgs

